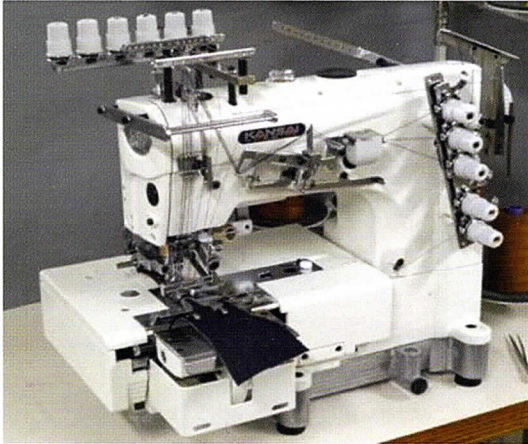




Belt-loop maker with smocking mechanism



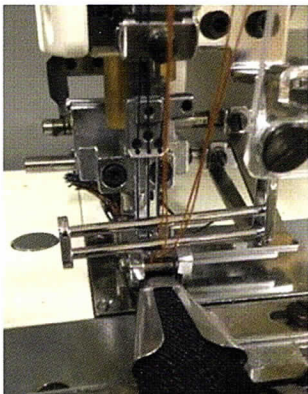
# NW2202GC-MM



3 needle, flatbed, bottom cover-stitch, belt-loop making machine with front fabric knife and 2 spreader 6 thread smocking mechanism

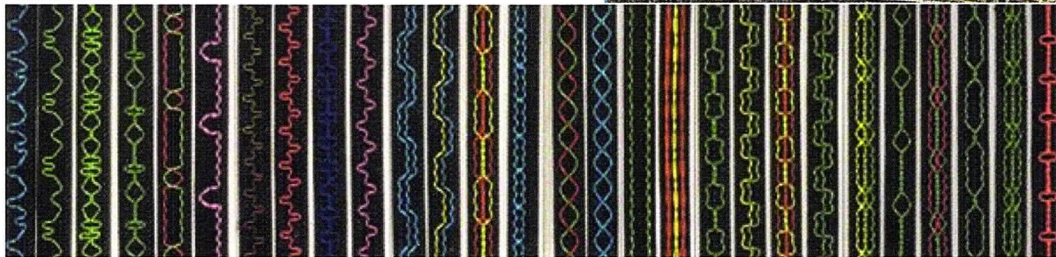
- ① The support (front) presser foot is independent against the main presser foot, so it is easy to remove, and it has a stopper to keep the lifted position. Therefore, it is easy to insert the fabric when starting the operation.
  - ② Equipped with adjusting dials, both spring pressure of right and left lower knives can be equally adjusted.
  - ③ Adjusting knob enables the machine to produce belt-loop from 8mm up to 20mm.
- \* For the width over 16mm, the special wide needle plate and feed dogs are needed.

## Features



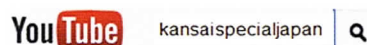
Design of the smocking can be easily changed from backside of the machine by changing the cam, changing thread variation

※ more than 20 cams are available .



Fabric weight	Type of Needle	No. of Thread	Gauge	Needle bar stroke	Stitch length	Diff. feed ratio	Presser foot lift	Max speed
Medium-heavy	UY128GAS # 16	10	1/4	31 MM	2.1-4.2 mm	N/A	6 mm	2000 rpm

Headquarters & Factory  
MORIMOTO MFG. CO., LTD.  
Osaka, Japan  
hqeigyo@kansai-special.com



www.kansai-special.com/www.kansai-special.de

Central European Branch  
KANSAI SPECIAL EUROPE GmbH  
Düsseldorf, Germany  
sales@kansai-special.de